

Consaver MAX™

Two-piece Toilet 4217/4218/4219

BRIGGS®

Features

- 1.6 gpf or 1.1 gpf Dual Flush options
- Tank Made in USA
- Fluidmaster® fill valve
- 3" Flush valve
- Top-mount chrome push button
- High performance jetted bowl
- 2" Fully glazed trapway
- 12" rough in
- Limited Lifetime Warranty

Models

4217 Combination:

4380 Consaver MAX Round front bowl
Shipping weight: 40 lbs (18 kg)

4485 Consaver MAX 12" Rough-In tank
Shipping weight: 35 lbs (16 kg)

4218 Combination:

4385 Consaver MAX Elongated front bowl
Shipping weight: 45 lbs (20 kg)

4485 Consaver MAX 12" Rough-In tank
Shipping weight: 35 lbs (16 kg)

4219 Combination:

4388 Consaver MAX ADA front bowl
Shipping weight: 53 lbs (24 kg)

4485 Consaver MAX 12" Rough-In tank
Shipping weight: 35 lbs (16 kg)



Codes & Standards

Meets or exceeds the following:

- ASME A112.19.2
- CSA B45.1
- IAPMO/cUPC



Colors

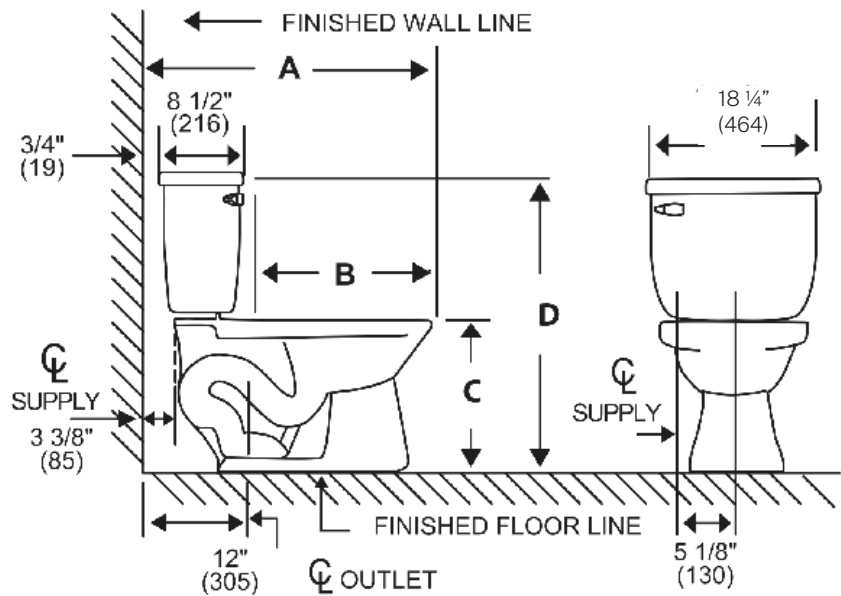
☐ White (130)


Conserver MAXTM

Two-piece Toilet 4217/4218/4219

BRIGGS[®]

Specifications



4217 Round	4218 Elongated	4219 ADA
A 28 1/4" (718)	30 1/4" (768)	30 1/4" (768)
B 19" (483)	21" (533)	21" (533)
C 14 7/8" (378)	14 7/8" (378)	17" (432) 
D 31 1/4" (794)	31 1/4" (794)	33 1/4" (845)

Material	Ceramic
Rough-In	12" (305mm)
Water Usage	1.6 or 1.1 gpf
Water Pressure Range	20/50/80 PSI
Flush System	2" Dual Flush
Water Surface Area	≥ 125 * 100 mm
Trap Diameter	≥ 1 7/8"

Trap Seal	≥ 51 mm
Shipping Weight	Tank: 16 kg/ PCS Bowl: RF: 18 kg/ PCS EL: 20 kg/ PCS ADA: 24 kg/ PCS
Warranty	Ceramic: Lifetime Tank fittings: 1 year

Dimensions may vary (+) or (-) 1/4". Dimensions shown in parentheses are in millimeters: 25.4 mm = 1 inch. Note: Fixture dimensions are nominal and conform with dimension and performance requirements of ASME A112.19.2-2008/CSA B45.1-08 standards. PSI rating: 20 minimum to 80 maximum per ASME A112.19.2-2008/CSA B45.1-08 standards. Dimensions subject to change or cancellation without notice. Briggs is not responsible for the use of superceded or voided specification information.