

Altima™


Two-piece Tall Elongated ADA Toilet 4234

BRIGGS®

Features

- Vitreous China
- 12" (305 mm) rough-in
- 1.6 gpf/6.0 Lpf
- Premium color-matched trip lever
- R&T® fittings
- Angular tank design
- Toilet seat sold separately

Models

4234 Combination: 

4328 Altima Elongated ADA front bowl
Shipping weight: 49 lbs (22 kg)

4450 Altima 12" Rough-In tank
Shipping weight: 36 lbs (16 kg)

Optional Tanks:

- 4452 12" R.I. with Right Hand Flush Lever
- 4454 10" Rough-in Tank
- 4455 14" Rough-in Tank



Colors

- ☐ White (130)
- ☐ Biscuit (235)
- ☐ Bone (733)



Codes & Standards

Meets or exceeds the following:

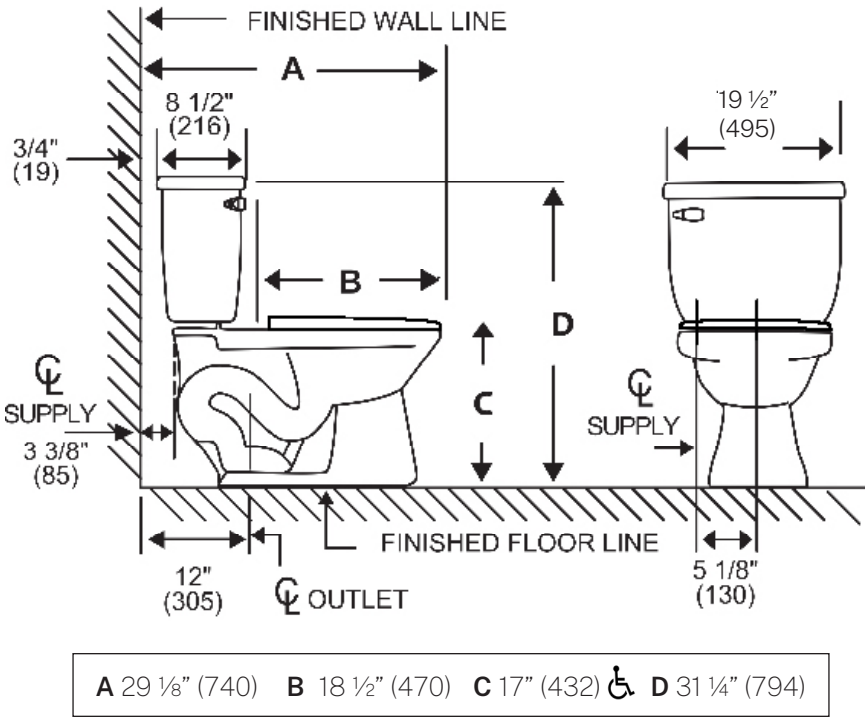
- ASME A112.19.2
- CSA B45.1
- ICC A117.1-2017
- IAPMO/cUPC  

Altima™

Two-piece Tall Elongated ADA Toilet 4234

BRIGGS®

Specifications



Material	Ceramic
Rough-In	12" (305mm)
Water Usage	1.6 gpf
Water Pressure Range	20/50/80 PSI
Flush System	2" Single Flush
Water Surface Area	≥ 125 * 100 mm
Trap Diameter	≥ 1 7/8"

Trap Seal	≥ 51 mm
Shipping Weight	Tank: 16 kg/ PCS Bowl: ADA: 22 kg/ PCS
Warranty	Ceramic: Lifetime Tank fittings: 1 year

Dimensions may vary (+) or (-) 1/4". Dimensions shown in parentheses are in millimeters: 25.4 mm = 1 inch. Note: Fixture dimensions are nominal and conform with dimension and performance requirements of ASME A112.19.2-2008/CSA B45.1-08 standards. PSI rating: 20 minimum to 80 maximum per ASME A112.19.2-2008/CSA B45.1-08 standards. Dimensions subject to change or cancellation without notice. Briggs is not responsible for the use of superceded or voided specification information.