

Altima™

Round Two-piece Toilet 4232

BRIGGS®

Features

- Vitreous China
- 12" (305 mm) rough-in
- 1.6 gpf/6.0 Lpf
- Premium color-matched trip lever
- R&T® fittings
- Angular tank design
- Toilet seat sold separately

Models

4232 Combination:

4320 Altima Round front bowl
Shipping weight: 41 lbs (19 kg)

4450 Altima 12" Rough-In tank
Shipping weight: 36 lbs (16 kg)



Optional Tanks:


4452 12" R.I. with Right Hand Flush Lever

4454 10" Rough-in Tank

4455 14" Rough-in Tank

Codes & Standards

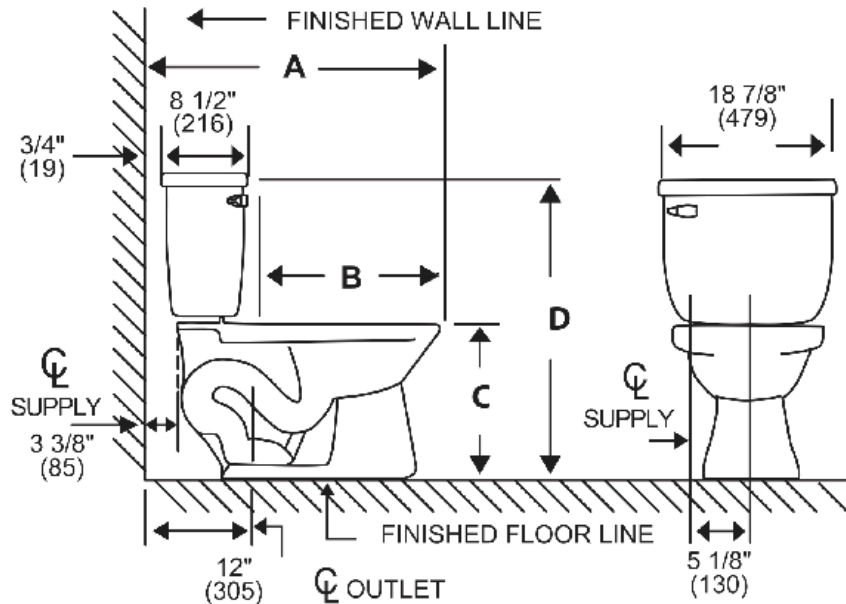
Meets or exceeds the following:

- ASME A112.19.2
- CSA B45.1
- IAPMO/cUPC 

Colors

- ☐ White (130)
- ☐ Biscuit (235)
- ☐ Bone (733)

Specifications



A 27" (686) **B** 16 5/8" (422) **C** 14 5/8" (371) **D** 29 1/4" (743)

Material	Ceramic
Rough-In	12" (305mm)
Water Usage	1.6 gpf
Water Pressure Range	20/50/80 PSI
Flush System	2" Single Flush
Water Surface Area	≥ 125 * 100 mm
Trap Diameter	≥ 1 7/8"

Trap Seal	≥ 51 mm
Shipping Weight	Tank: 16 kg/ PCS Bowl: RF: 19 kg/ PCS
Warranty	Ceramic: Lifetime Tank fittings: 1 year

Dimensions may vary (+) or (-) 1/4". Dimensions shown in parentheses are in millimeters: 25.4 mm = 1 inch. Note: Fixture dimensions are nominal and conform with dimension and performance requirements of ASME A112.19.2-2008/CSA B45.1-08 standards. PSI rating: 20 minimum to 80 maximum per ASME A112.19.2-2008/CSA B45.1-08 standards. Dimensions subject to change or cancellation without notice. Briggs is not responsible for the use of superceded or voided specification information.